



# ROSANEGRA®

L A T I N   A M E R I C A N   C U I S I N E

BY GRUPO ROSANEGRA

CDMX- POLANCO





PASSION FOR LIVING  
AND GOOD FOOD





RosaNegra® is a space that exudes freedom, a tribute to Latin American cuisine. Our eclectic menu includes gastronomic traditions from countries like Peru, Argentina, Colombia, Brazil and Mexico, showcasing authentic and daring flavours.



# KOBE *Beef*



DEVOTION TO GREAT FOOD



# MENU 01

## FIRST COURSE

*To choose*

### **GIANT ORGANIC BEET (VEGETARIAN)**

Charcoal grilled, feta cheese  
mousse, balsamic vinegar  
pistachios, baby arugula

### **PERUVIAN CEVICHE**

Leche de tigre, red onion, sweet  
potato, white corn, choclo

### **CAESAR SALAD**

Anchovies, parmesan cheese,  
croutons

## SECOND COURSE

*To choose*

### **MUSHROOM AND TRUFFLE RISOTTO**

Carnaroli rice · royal trumpet ·  
porcini morel king oyster  
mushrooms · Grana Padano  
cheese · black truffle oil

### **SPICE RUBBED CATCH OF THE DAY**

Aioli · yellow aji pepper · creole  
sauce · green lime

### **SKIRT STEAK 350g**

## DESSERT

*To choose*

### **CARROT CAKE**

Organic carrots, frosting

### **ICE CREAM**

coco. vanilla · chocolate

### **CHOCOLATE CAKE**

Valrhona gourmet chocolate  
whipped cream

**\$1,000 MXN**

Tax included, 15% gratuity not  
included





# MENU 02

## FIRST COURSE

To choose

### **STREET CORN ON THE COB (VEGETARIAN)**

Charcoaled, epazote aioli,  
powdered chili pepper

### **ROSANEGRA SALAD**

Lettuce mix · mustard dressing ·  
whole hearts of palm · medium  
strawberries · dome-shaped dried  
blueberries · caramelized peanuts  
carrot · natural goat cheese

### **EMPANADAS (2 pieces)**

Spicy ground beef and tuna  
Vizcaina

## SECOND COURSE

To choose

### **NEW YORK**

200 g

### **SKILLET SEARED TASMANIAN SALMON**

Olive oil · sea salt · sweet potato ·  
creole sauce · tarragon aioli ·  
cinnamon butter 10 oz

### **RISOTTO WITH FILLET**

Parmesan cheese · sliced beef  
fillet · fresno pepper · creole sauce  
black truffle oil 5 oz

## SIDES

JOSPER VEGETABLES

SWEET POTATO

RUSTIC POTATOES

## DESSERT

To choose

### **CHOCOLATE CAKE**

Valrhona gourmet chocolate

### **FLAN TASTING**

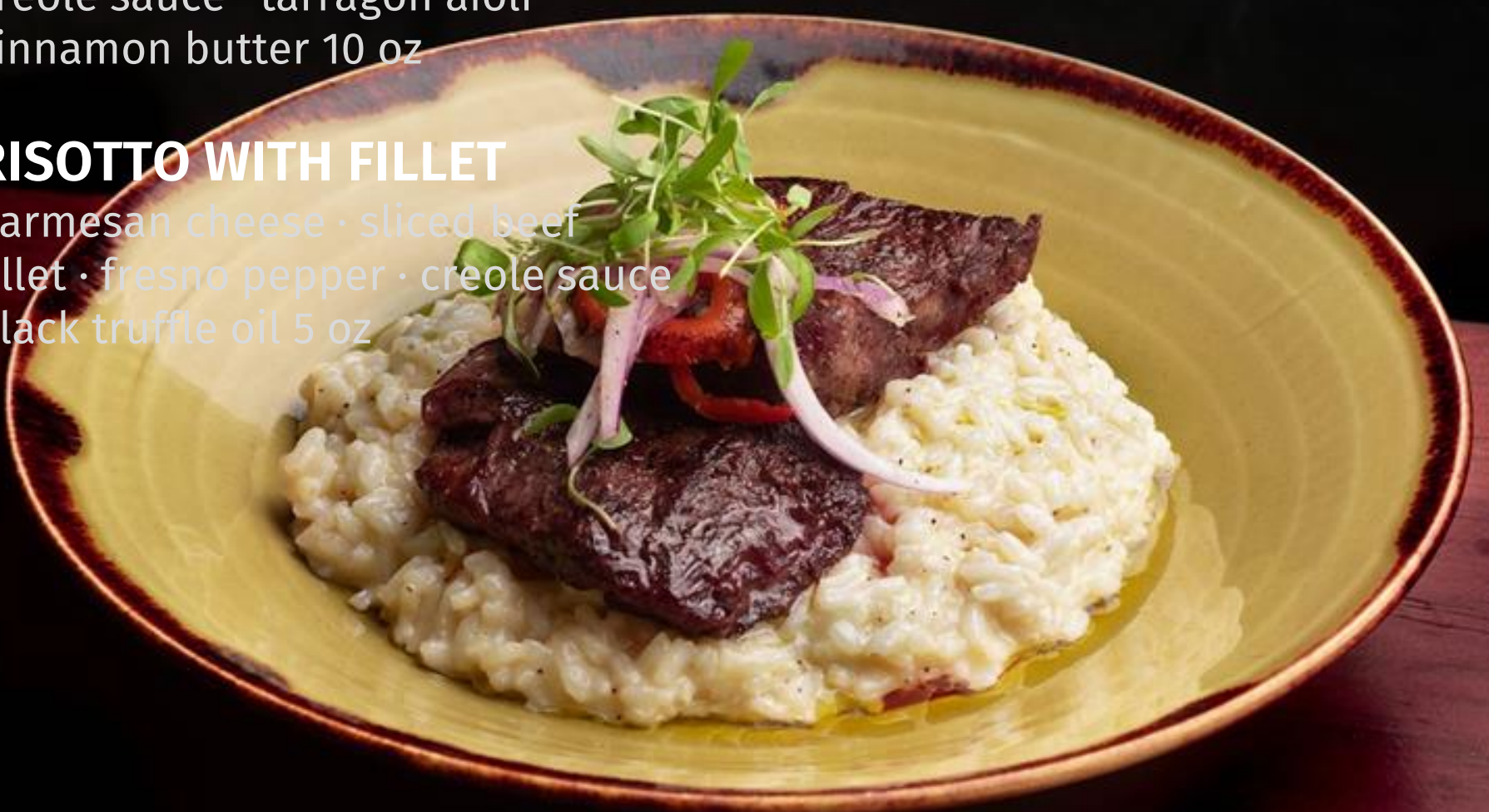
Passion fruit, dulce de leche, goat  
cheese

### **ICE CREAM**

Dulce de leche, coconut, vanilla,  
chocolate

**\$1,250 MXN**

Tax included, 15% gratuity not  
included





# MENU GOURMET

## FIRST COURSE

To choose

### **BURRATA**

Figs, baby arugula, balsamic reduction, chipotle powder  
toasted pumpkin seeds

### **GUACAMOLE**

Mashed avocado · pico de gallo  
white cheese · coriander

### **TUNA CEVICHE**

Black sauce · avocado · serrano  
pepper · garlic chips · cucumber

## SIDES

To choose

**Creamed spinach**

**Mashed sweet potato**

**Mashed potato (clasic)**

## THIRD COURSE

To choose

### **SUPER COLOSSAL OCTOPUS**

Mexico Charcoaled, paprika,  
olives, Only 0.0025%  
of Mexico's octopus production  
qualify for this category

### **RIB EYE**

200 g

### **SEARED TUNA**

Sesame oil · achiote · ginger  
vinaigrette creole sauce

## DESSERT

To choose

### **BLUEBERRY CHEESECAKE**

Fresh Blueberries

### **CHOCOLATE CAKE**

Valrhona gourmet chocolate

### **CARROT CAKE**

Organic carrot, betun cheese

**\$1,650 MXN**

Tax included, 15% gratuity not  
included





# TERMS AND CONDITIONS

Prices include taxes , **15%** gratuity

Dishes included in the menu can be changed for vegetarian, vegan, gluten-free and lactose-free dishes for people who suffers from allergies or intolerances. | The assembly will be carried out at the request of the client, in tables of up to 15 people maximum. | The furniture and decoration of the restaurant cannot be modified. Screens, microphones or lighting that alter the atmosphere of the restaurant are not allowed.

Any request to enter decorative material must be requested in advance. By company policy we do not accept uncorks.

**BUY OUTS** are subject to authorizathion, the sales executive would be send a quotation.

## PAYMENT:

To confirm the reservation a **50%** deposit is required.

The forms of payment if you are within the country (Mexico): It can be direct at the branch days before the event in cash, credit / debit card, wire transfer or PayPal.

International Payments (Outside Mexico): Credit / Debit Card or PayPal. | The 50% downpayment must be paid upon arrival at the branch on the day of the event. The extras will be paid at the end of the event.

No shows are charge 100%

Any cancellation or change of date with less than 4 days in advance, a **50%** charge will be made on the total service.

With less than 48 hours in advance of the event's start time, a 100% charge will be made on the total service.

CANCUN · TULUM · CDMX · CABOS · ISLA MUJERES · MADRID



GRUPO  
ROSANEGRA

ULTRA HIGH END ENTERTAINMENT RESTAURANTS

CANCUN · TULUM · CDMX · CABOS · ISLA MUJERES · MADRID